

REVIEW: BOATS

S
T
A
T
E
B
Review:

BIMINI
MARINE

245 SPORT EXPRESS
WITH TWIN INBOARD
POWER STANDARD

**THERE'S
NEVER
BEEN A
24-FOOTER
WITH ALL
THESE
FEATURES**



When Dan Clayland, president of Bimini Marine decided to build a mid size sport fishing boat that he could fish offshore in, he initially made a list of impressive demands. The boat had to be rock solid, it had to be economical to run and maintain, and it had to have the reliability and dependability to fish some 50-100 miles offshore, and all for an affordable price. The result, the Bimini 245 Sport Express.

The 245 SX is all new — from the waterline up. Plus, it's the only 24 footer around with twin inboard power, standard! Originally designed by Topaz as an inboard center console, the new Sport Express shares the

same popular modified deep V hull design as its legendary cousin (17 degrees of dead rise at the transom).

Under the watchful eye of Clayland, who recently acquired the rights to Bimini Marine, the hull was modified to accept twin inboards. "This gives the boat the dependability, reliability and the agility to chase big fish far from the beach. Placing the engines amidship, results in balanced weight distribution for a smoother ride and gives the boat a much larger feel, very different from the all too familiar 24-foot outboard boats that are currently on the market" say Clayland.

The placement of the engines also creates an impressive cockpit, it measures six foot six inches by seven foot three inches. The 245's cockpit is absolutely the largest in its class and features a molded nonskid surface, two in-the-floor fish boxes and self

bailing scuppers. Additional benefits include toe lock for stability and knee-high gunwales. The obstruction free transom is also one of the best in its class which will be greatly appreciated when maneuvering and working big fish.

The Sport Express 245 offers rock solid construction. The hull is solid hand laid fiberglass with vinylester resin to prevent blistering and is finished off with a high gloss gel coat. In addition the continuous stringers are also encapsulated in glass. There is a one-piece liner throughout with a high gloss gel coat finish and the deck and cockpit have a nonskid finish which are cored with divinycell for reinforcement and stiffness.

The instrument console, an integral part of the deck structure, is completely molded to accommodate engine instruments, controls and steering. Behind the engine

cluster is a molded instrument pad designed to contain flush-mounted electronics, and behind this is a large molded compass pad. An additional large chart plotter or video sounder can be mounted in an area which is located on the companion side of the helm.

Below deck in the spacious cabin, there are built-in tackle lockers on both sides, marine head with holding tank, plenty of room for rod storage, a rope locker, twin berths with below storage areas and a Bomar hatch with screen. Below deck storage is then increased with white diamond plate shelves and the headroom is outstanding for a cabin on a boat in it's class. The 245 SX features two high capacity bilge pumps with automatic switches and a bonding system throughout also assures safety. Above

deck, the sleek stylish lines are complemented by a full, brushed aluminum windshield that is curved around the corners for great looks and is fitted to the deck structure for exceptional strength.

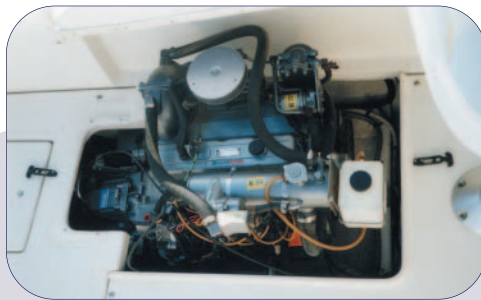
Bimini Marine offers a long list of standard features that are usually only found on much larger offshore yachts. All hardware is 304 stainless or better, steering is provided by a Sea Star hydraulic system, instruments are VDO, and again there is a bonding system throughout with transom zinc.

Under the hood of the Sport Express 245 you will find a pair of 4 cylinder freshwater cooled rockets with a combined output of 300 hp. PYI water injected shaft logs are

also standard along with a circuit breaker panel for all electrical connections. This boat was built for the demanding offshore fisherman.

Bimini Marine is committed to producing a line of semi-custom, inboard sport fishing boats, which are designed with the dependability, performance, and uncompromised quality and detail that discerning buyer's demand. These boats are affordable to operate and maintain, and give the owner and manufacturer alike the feeling of pride which is only enjoyed from an all around top quality product.

245 SPORT EXPRESS TOUGH ENOUGH TO FISH ANYWHERE



There's easy access to the twin Marine Power inboards for convenient servicing



Built-in fish boxes and access hatches for all below deck hardware are standard



Below decks, the 245SX has increased headroom, sleeps two in exceptional comfort, provides ample storage space



The command helm station provides all the instrumentation necessary, and plenty of room for electronics

245 SPORT EXPRESS SPECIFICATIONS

L.O.A.	24'4"
BEAM	8'0"
DRAFT	2'0"
DEADRISE AT TRANSOM	17 DEGREES
DRY WEIGHT (APPROX)	5,000 LBS.
FUEL CAPACITY	140 GALLONS
STANDARD POWER.	TWIN 150 HP INBOARDS

For More Info Contact:
BIMINI MARINE

BIMINI
MARINE

12925 Horn Island Drive
Ocean City, Maryland 21842
410.213.9545 phone
800.699.3265 toll free
www.biminimarine.com